



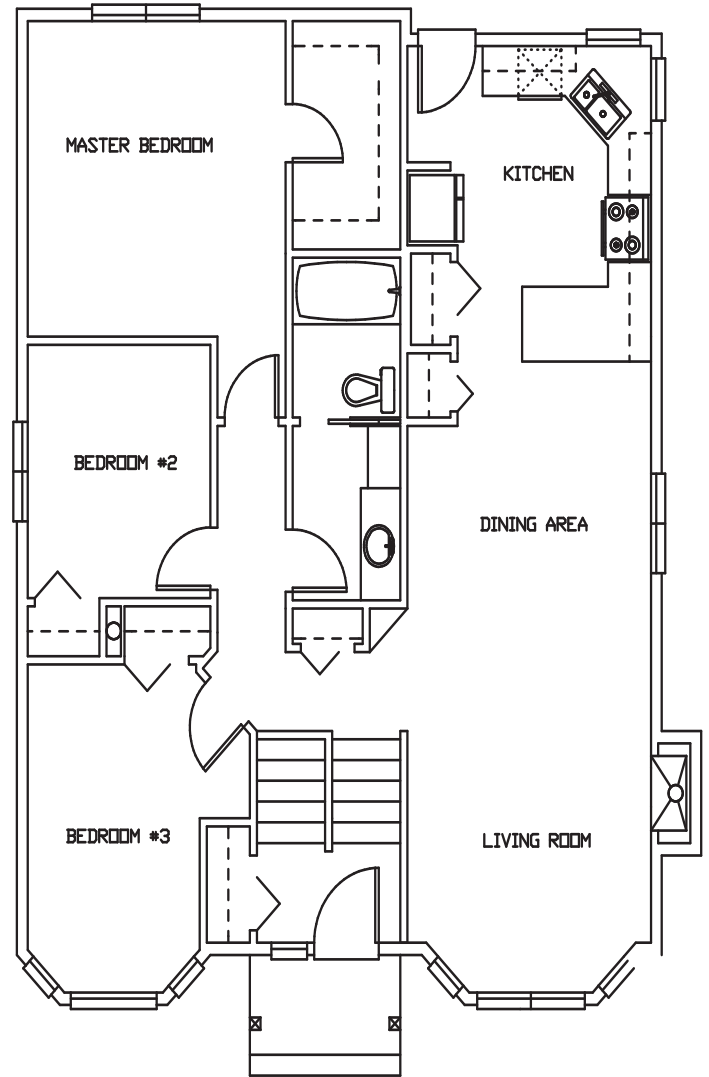
Building on Tradition and Value

# THE CLOVERDALE

## 1158 SQ FT.

### BI-LEVEL

This plan is the property of Asset Builders and may not be built from or reproduced in whole or in part without written permission. This drawing is only a purposed illustration.



The Alberta  
New Home  
Warranty  
Program

Call 403-342-2738  
[www.assetbuilderscorp.ca](http://www.assetbuilderscorp.ca)

Canadian  
Home Builders'  
Association



Central Alberta  
Trust Safety Value